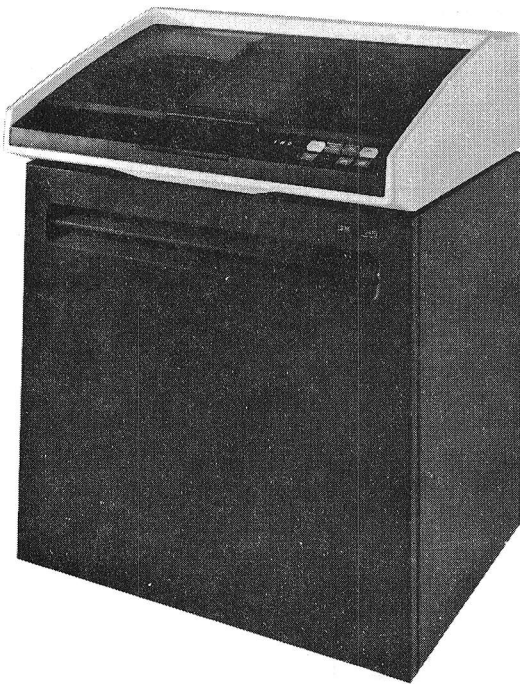
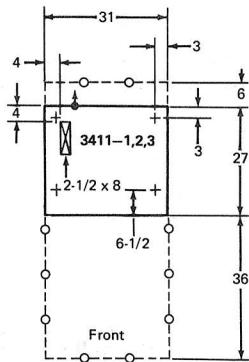


3411 MAGNETIC TAPE UNIT AND CONTROL  
MODELS 1, 2, AND 3

Plan View



Specifications

Dimensions:

|             | Width | Depth | Height |
|-------------|-------|-------|--------|
| Inches      | 31    | 27    | 39     |
| Centimeters | 79    | 69    | 99     |

Service Clearances:

|             | Front | Rear | Right | Left |
|-------------|-------|------|-------|------|
| Inches      | 36    | 6    | 0*    | 0*   |
| Centimeters | 91    | 15   | 0*    | 0*   |

Weight: 325 lb (150 kg)

Heat Output/hr: 3500 Btu (880 kcal)

Airflow/min: 200 ft<sup>3</sup> (6 m<sup>3</sup>)

Power Requirements:

|                  |                                    |                   |
|------------------|------------------------------------|-------------------|
| Voltage          | 208/230 ± 10%                      |                   |
| kVA              | 60 Hz All Models and 50 Hz Model 1 | 50 Hz Models 2, 3 |
| Phases           | 1.2                                | 1.2               |
| Plug Type        | 1                                  | 3                 |
| Power cord style | C                                  | ---               |
|                  | A2                                 | D2                |

Operating Environment:

|                   |                             |
|-------------------|-----------------------------|
| Temperature       | 60° to 90° F (16° to 32° C) |
| Relative humidity | 20% to 80%                  |
| Maximum wet bulb  | 78° F (26° C)               |

Nonoperating Environment:

|                   |                              |
|-------------------|------------------------------|
| Temperature       | 50° to 110° F (10° to 43° C) |
| Relative humidity | 8% to 80%                    |
| Maximum wet bulb  | 80° F (27° C)                |

\* The 3410 can be attached to either side of the 3411, with a maximum of three units on a side. The 3411 Model 1 can have up to three 3410s attached (total capability of four tape units).

All units are physically attached at the front corner, allowing up to 90° swing between units.